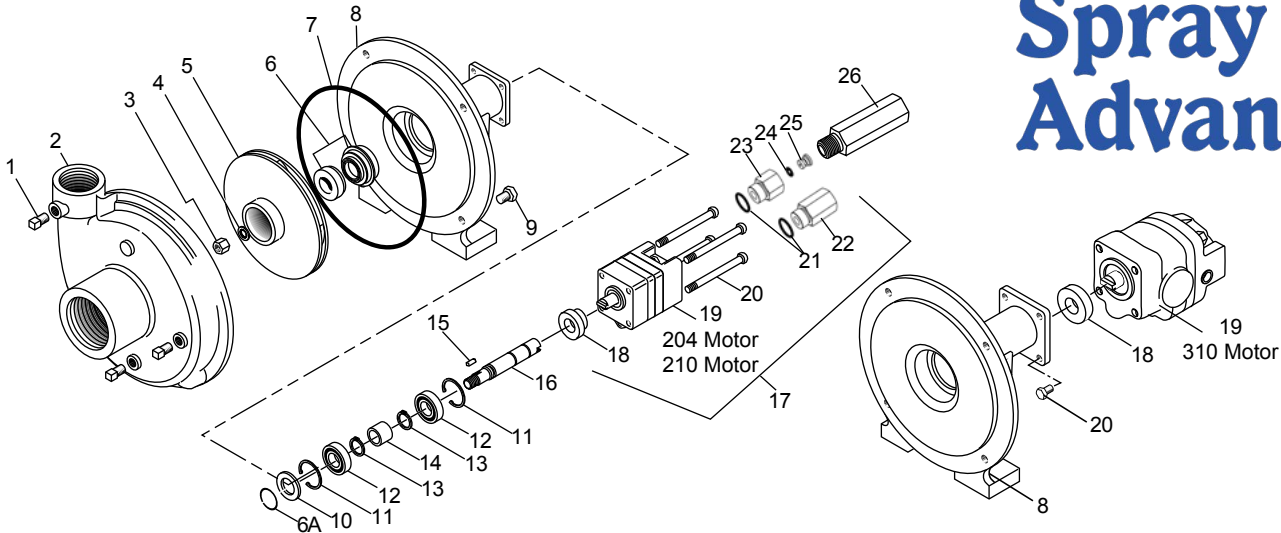




FMC-HYD-204, FMCSC-HYD-204
FMC-HYD-210, FMCSC-HYD-210
FMC-HYD-310, FMCSC-HYD-310



REF. #	PART NUMBER	EDP.#	DESCRIPTION	REQ.
1	BAC-53	41110	Pipe Plug	3
1	41120	41120	Pipe Plug, Stainless Steel (Optional)	3
2	BAC-12	40250	Volute, 1-1/4" x 1"	1
3	BAC-23-A	40391	Nut, 3/8" NF, Cad Plated	1
3	BAC-23-A-SS	40392	Nut, 3/8" NF, Stainless Steel (Optional)	1
4*+	BAC-24-HYD-SS	40400	Washer, 3/8" Star, Stainless Steel	1
5	BAC-26-HYD-VALOX	40440	Impeller, Valox, Keyway	1
5	BAC-26-HYD-CI	40442	Impeller, Cast Iron, Keyway (Optional)	1
6*	BAC-7V	40151	Seal, Mechanical, Viton (Includes 40160)	1
6+	BAC-7SC	40152	Seal, Mechanical, Silicon Carbide, (Includes 40160), (Optional)	1
6A*+	40160	40160	O-Ring, Shaft Seal	1
7*+	BAC-4A	40005	O-Ring, Body Seal	1
8	BAC-14-HYD	40300	Mounting Frame (For-200 Series Hydraulic Motor)	1
8	BAC-14-HYD-300A	40314	Mounting Frame (For-300A Series Hydraulic Motor)	1
9	40950	40950	Cap Screw, 3/8" NC x 3/4" Hex Head	4
9	40930	40930	Cap Screw, 3/8" NC x 3/4" Hex Head, Stainless Steel (Optional)	4
10	BAC-54	41130	Slinger	1
11	BAC-33	40810	Snap Ring, Internal, BAC-14 Mounting Frame	2
12	BAC-37	40870	Ball Bearing, Sealed, BAC-6 Shaft	2
13	BAC-32	40790	Snap Ring, External, BAC-6 Shaft	2
14	BAC-32-S	40795	Spacer for BAC-6 Shaft	1
15	BACH-25	40420	Key, 1/8" x 1/8" x 1/2"	1
16	BAC-6-HYD-SS	40061	Shaft, 5/8" Diameter, Keyway and Tang Slot, Stainless Steel	1
17	BAC-75-HYD-210	41367	Hydraulic Motor, 10 GPM (Includes Parts 18-25)	1
18	S200	40161	Seal Support Spacer, 200 Series HYD Motor	1
18	S300	40162	Seal Support Spacer, 300 Series HYD Motor	1
19	BAC-75-HYD-204N	41367	Hydraulic Motor, 4 GPM (Motor Only, No External Fittings)	1
19	BAC-75-HYD-210N	41367	Hydraulic Motor, 10 GPM (Motor Only, No External Fittings)	1
19	BAC-75-HYD-310	41367	Hydraulic Motor, 16 GPM (310A Motor Effective March 2006)	1
20	41253	41253	Cap Screw, 5/16" NC x 3-1/2" Hex Head (For 204N Motor)	4
20	41254	41254	Cap Screw, 5/16" NC x 4" Hex Head (For 210N Motor)	4
20	41330	41330	Cap Screw, 5/16" NC x 4-3/4" Hex Head (For 310 Motor)	4
21	41875	41875	O-Ring, #8 SAE Fitting	2
22	BAC-78-8-SAE	41441	Reverse Check Valve, #8 SAE Male x 1/2" NPT Female	1
23	BAC-80-8SAE	41455	Adapter, Restrictor Body, #8 SAE Male x 1/2" Female	1
24	41448	41448	O-Ring, Orifice Insert	1
25	BAC-79-5	41457	Orifice, Restrictor Insert, .078 (204N)	1
25	BAC-79-7	41456	Orifice, Restrictor Insert, .109 (210N)	1
26	LS-204N	41417	Flow Limiting Valve (204N) #8 SAE Male x 1/2" NPT Female	1
26	LS-210N	41423	Flow Limiting Valve (210N), #8 SAE Male x 1/2" NPT Female	1
*	RK-FMC	52700	Repair Kit For FMC Series Pump	-
+	RK-FMCSC	52706	Repair Kit For FMC Series With Silicon Carbide Shaft Seal	-
#	RK-BAC-75-HYD-L	41374	Repair Kit For 200 Series Motor With High Pressure Lip Seal If Replacing Old Style Quad Seal You Will Need 40161 Seal Support Spacer	-
#	RK-BAC-75-HYD-300-L	41362	Repair Kit For 310 Motor With High Pressure Lip Seal If Replacing Old Style Quad Seal You Will Need 40162 Seal Support Spacer	-

* Items Included In Pump Repair Kit.