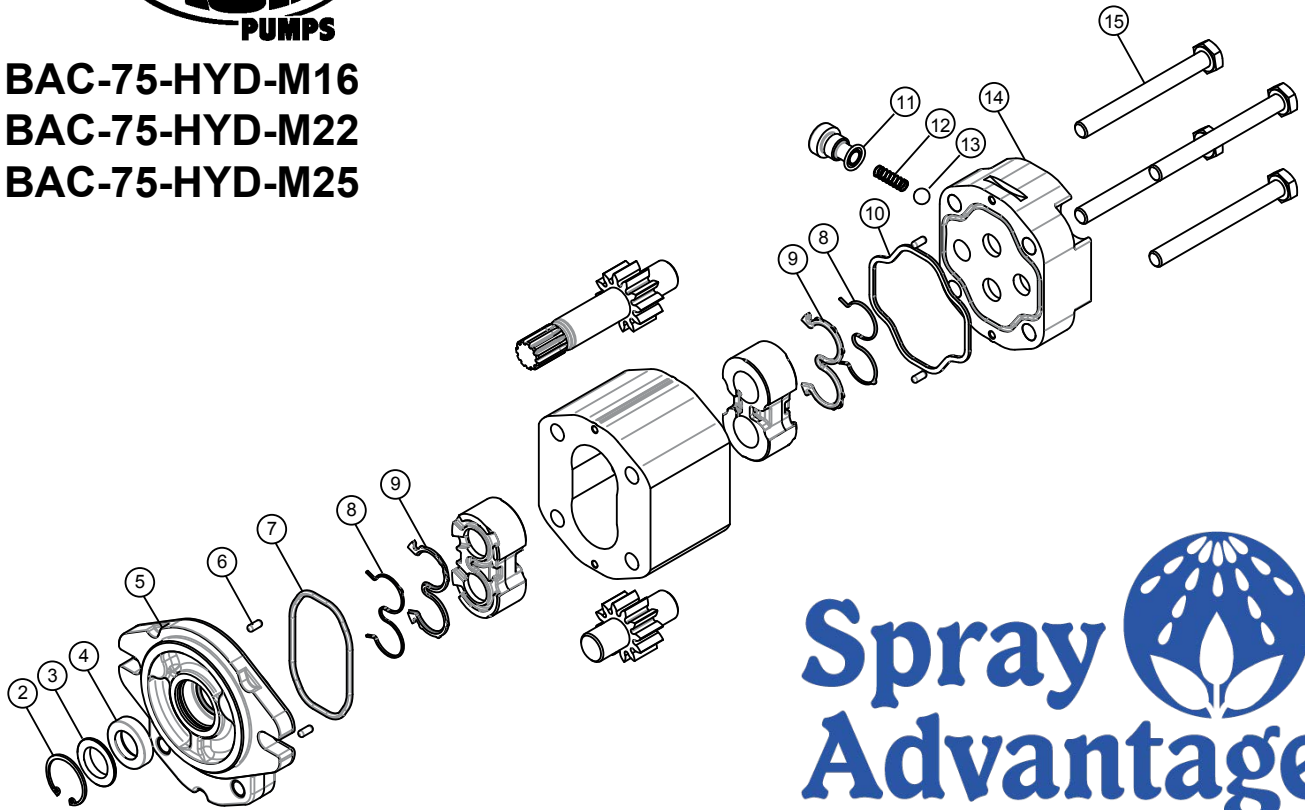


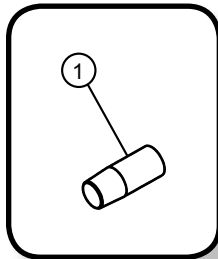


## HYDRAULIC MOTOR PARTS LIST

**BAC-75-HYD-M16**  
**BAC-75-HYD-M22**  
**BAC-75-HYD-M25**



**Spray Advantage**



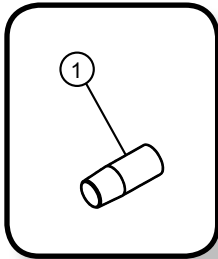
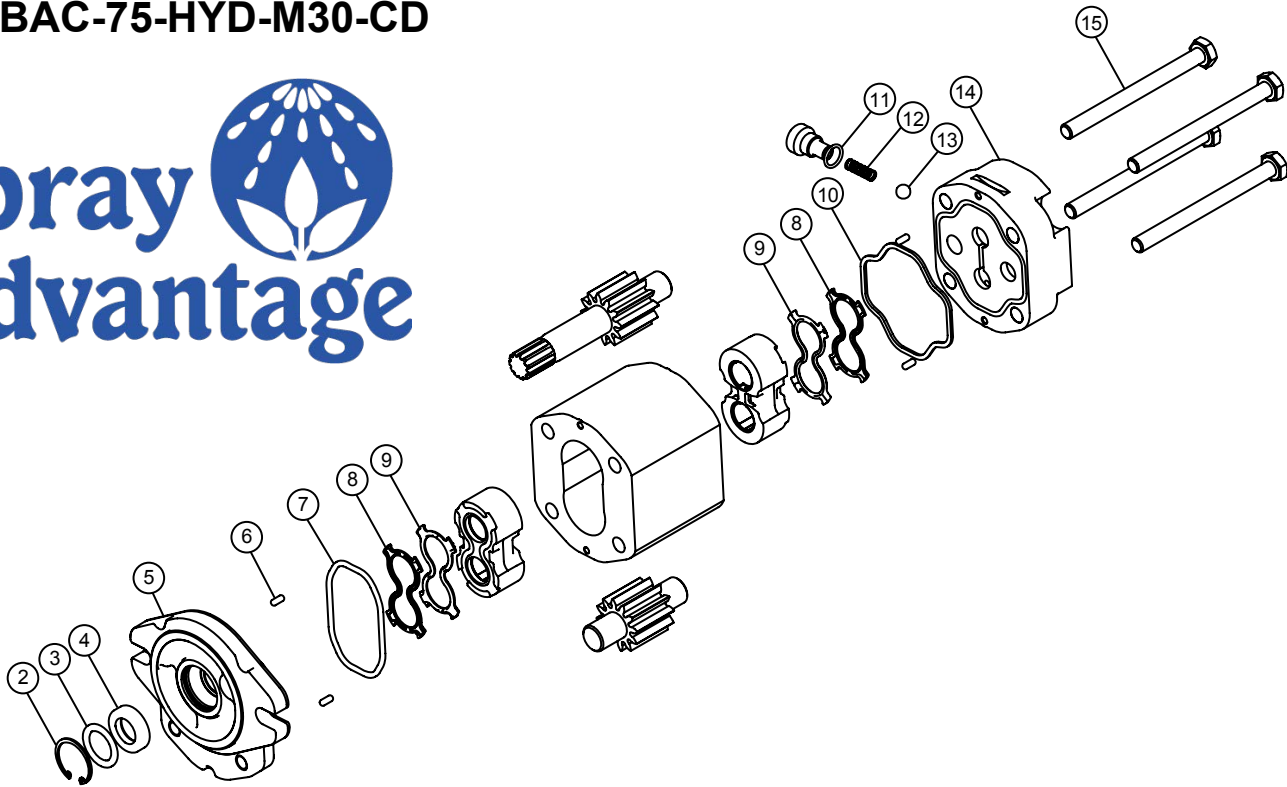
Note: The M Series motors are high efficiency pressure balanced gear motors. If there is damage to items not marked with a part number - the motor is not repairable and should be replaced.

Important: The seal installation tool (#1) is required to install the shaft seal. This tool is included with the seal kit (40136). It prevents damage to the seal lips during installation over the splined shaft.

REF #	M16	M22	M25	DESCRIPTION	REQ.
1*	43416	43416	43416	Installation tool, shaft seal	1
2*	43400	43400	43400	Snap ring, shaft seal retainer	1
3*	43405	43405	43405	Support ring, shaft seal, M motors	1
4*	43410	43410	43410	Shaft seal, high pressure, Telon, M motors	1
5	43415	43415	43415	Drive plate, flange, M motors	1
6	43420	43420	43420	Pin, motor assembly	4
7	43425	43425	43425	Housing seal, front external	1
8	43430	43430	43430	Anti-extrusion seal, M motors	2
9	43435	43435	43435	Compensation seal, M motors	2
10	43440	43440	43440	Housing seal, rear external	1
11	43450	43450	43450	O-ring, coasting check cap	1
12	43455	43455	43455	Spring, coasting check	1
13	43460	43460	43460	Ball, coasting check	1
14	43465	43465	43465	End plate, cover, #10 SAE end ports	1
15	43470			Cap screw, motor assembly, hex head	4
		43475	43475	Cap screw, motor assembly, hex head	4
*	40136	40136	40136	BAC-75-M-PTFE, Shaft Seal Kit Includes 1-4	--



BAC-75-HYD-M30-CD



Note: The M Series motors are high efficiency pressure balanced gear motors. If there is damage to items not marked with a part number - the motor is not repairable and should be replaced.

Important: The seal installation tool (#1) is required to install the shaft seal. This tool is included with the seal kit (40164). It prevents damage to the seal lips during installation over the splined shaft.

REF #	M30-CD	DESCRIPTION	REQ.
1*	43416	Installation tool, shaft seal	1
2	43400	Snap ring, shaft seal retainer	1
3	43407	Spacer ring, shaft seal, M-CD motors	1
4*	43411	Shaft seal, Viton, M-CD motors	1
5	43417	Drive plate, flange, M-CD motors	1
6	43420	Pin, motor assembly	4
7	43425	Housing seal, front external	1
8	43431	Anti-extrusion seal, M-CD motors	2
9	43436	Compensation seal, M-CD motors	2
10	43440	Housing seal, rear external	1
11	43450	O-ring, coasting check cap	1
12	43455	Spring, coasting check	1
13	43460	Ball, coasting check	1
14	43466	End plate, cover, #6 case drain port	1
15	43480	Cap screw, motor assembly, hex head	4
*	40164	BAC-75-M-FKM, Shaft seal kit includes items 1 and 4	--