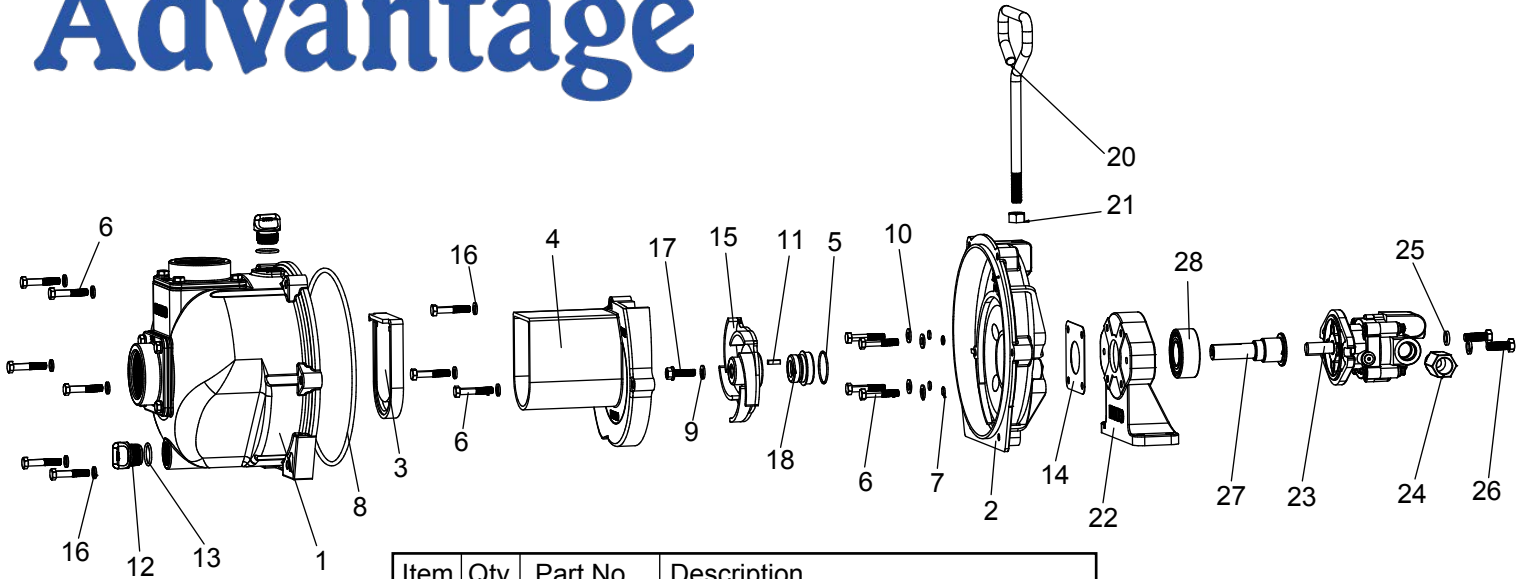


Spray Advantage



222 - 2" Cast Iron Pump Hydraulic Motor



Item	Qty	Part No.	Description
1	1	15712	Body Assembly
2	1	15703	Rear Bracket
3	1	12705	Check Valve
4	1	15702	Volute
5	1	12710	O-Ring
6	13	12715A	Bolt, 5/16-24 X 1-3/4"
7	4	12717	O-Ring
8	1	12719A	O-Ring
9	1	12774VA	Gasket, Impeller Bolt
10	4	12901	Flat Washer, 5/16"
11	1	12902A	Key, 3/16" Sq. X 5/8"
12	2	13777	Drain Plug, 3/4"
13	2	13778	O-Ring
14	1	15751	Rear Bracket Shim
15	1	15772	Impeller, 5 Vane
16	9	V10118	Lockwasher, 5/16"
17	1	12765A	5/16-24 X 1-1/8" HFS
18	1	12713V	Mech Seal Assy - FKM
	1	12713	Mech Seal Assy - EPDM (Optional)
	1	12713B	Mech Seal Assy - BUNA (Optional)
	1	12733V	Use 12713V
19	1	12910	Decal (N/S)
20	1	15022	Handle
21	1	17010	Nut, 1/2-13
22	1	12049E	Hyd. Motor Pedestal
23	1	HY10131	Hyd. Motor
24	1	HY10132	Hyd. Check Valve
25	2	V20018	3/8" Lockwasher
26	2	18010SS	3/8-16 X 1 1/8" HHCS
27	1	12055E	Shaft, Hyd. Adapter
28	1	17056E	Bearing