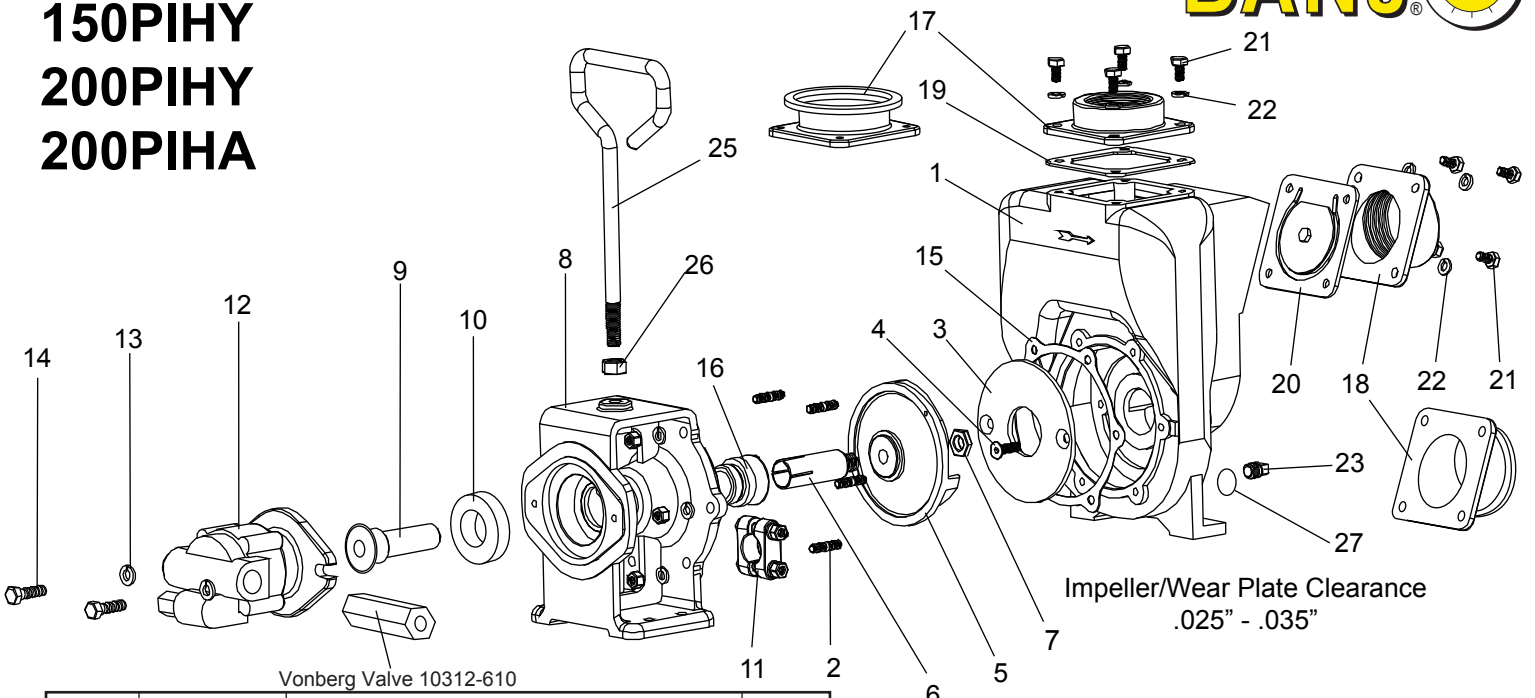


# Banjo 1-1/2 and 2" Hydraulic Cast Pump

**Models**  
**150PIHY**  
**200PIHY**  
**200PIHA**



Vonberg Valve 10312-610

ITEM	PART NO	DESCRIPTION	QTY
1	17026	Pump Housing	1
2	17042	Pump Housing Stud	6
3	17011	Wear Plate	1
4	17130	5/16-18 x 1" Flat Head Screw, SS	2
5	17008	5" Impeller	1
6	17007	Drive Sleeve, 7/8"	1
7	17009B	5/8" Impeller Nut	1
8	17049A	Hydraulic Adapter	1
9	17055A	Hydraulic Adapter Shaft	1
10	17056	Bearing	1
11	17024	7/8" Clamp, no Key	1
12	HY1013	Hydraulic Motor Assembly	1
13	V20018	3/8" Lock Washer	2
14	18010SS	3/8-16 x 1.25" HHHCS	2
15	17018	Gasket Adapter	1
16	17028	Seal Assembly, EPDM	1
	17035	Seal Assembly, FKM (viton type)	1
	17035SD	Seal Assembly, Severe Duty	1
17	17000	2" Outlet Flange, Threaded	1
	M17000	2" Outlet Flange, Manifold	1
	17001	1-1/2" Outlet Flange	1
18	17002	2" Inlet Flange, Threaded	1
	M17002	2" Inlet Flange, Manifold	1
	17003	1-1/2" Inlet Flange	1
19	17013	EPDM Gasket	1
20	17016	Gasket Check Valve Assembly	1
21	17019	5/16-18 x 0.75" Cap Screw	8
22	V10118	5/16" Split Lock Washer	14
23	12777	Plug	1
24	V10119	5/16-18 Hex Nut	6
25	15022	Handle	1
26	17010	1/2" Hex Nut - 13UNF-RH	1
27	UV15163	O-Ring	1
N/S	17100	Repair Kit (Consists of items 3, 5, 15, 16*)	1



U.S. Gallons/Rev. 0.0025  
 Cubic Inches/Rev. 0.580  
 Liters/Rev. 0.0097  
 Max Hydraulic Pressure 2000 PSI  
 Min Hydraulic Pressure 200 PSI  
 Inlet Port SAE 10 (7/8-14 UNF-2B)  
 Outlet Port SAE 10 (7/8-14 UNF-2B)  
 Minimum GPM Required 6 GPM 2400 RPM  
 Maximum GPM Required 10 GPM 4000 RPM  
 Ideal GPM Required 9 GPM 3600 RPM

**CONNECTION INFORMATION**

Inlet "A" Port  
 Outlet "B" Port

Supplied check valve is to ensure proper rotation of the Banjo pump. Place check valve in outlet port (marked "B") for proper right hand rotation.

**SPOOL VALVE INFORMATION**

Required Outlet Flow Min 8 GPM / Max 13 GPM  
 Required System Pressure Min 600 PSI / Max 3000 PSI