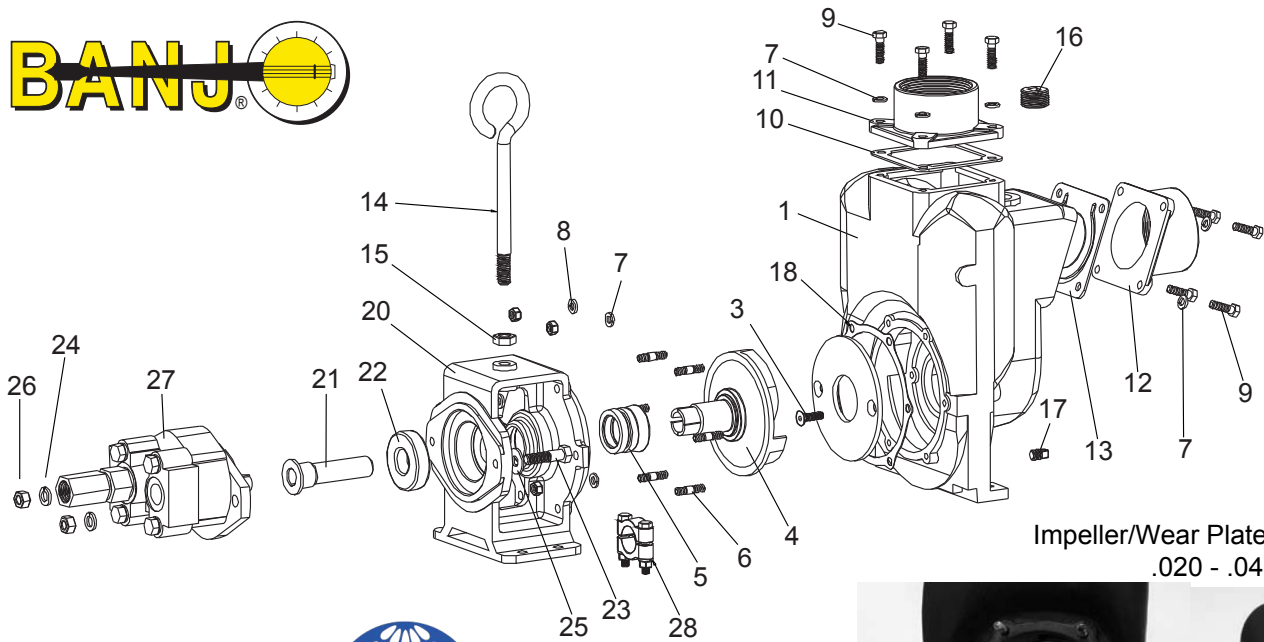


Banjo 3" Cast Iron Hydraulic Driven

Model 300PIHY



Impeller/Wear Plate Clearance
.020 - .040



Place spacer between wear plate and impeller and do not remove until bolted to drive shaft



REPLACEMENT PARTS 3" CAST IRON HYDRAULIC PUMPS

REF. NO.	PART NO.	DESCRIPTION	QTY.
1	18001	Pump Housing	1
2*	18004	Wear Plate	1
3*	18106	3/8-16 x 1.25" HHCS	2
4*	18023	Impeller & Drive Shaft	1
5*	18025	Mechanical Seal FKM (viton type)	1
5	18025SD	Severe Duty Seal	1
6	18218	Pump Housing Stud	6
7	V20018	3/8" Split Lockwasher	14
8	V20019	3/8-24 Hex Nut	6
9	18010SS	3/8-16 x 1.25" HHCS	8
10	18009	Outlet Gasket EPDM	1
11	18008	3" Outlet Flange, Threaded	1
	M18008	3" Outlet Flange, Manifold	1
12	18012	3" Inlet Flange, Threaded	1
	M18012	3" Inlet Flange, Manifold	1
13	18013	3 Inlet/Check Gasket EPDM	1
14	18033	Pump Handle 5/8-11 Thread	1

REF. NO.	PART NO.	DESCRIPTION	QTY.
15	18034	5/8" - 11 Hex Nut	1
16	18002	1" NPT Plug	1
17	18003	1/2" NPT Plug	1
18*	18021	3" Pump Adapter Gasket	1
20	18049	Hydraulic Motor Adapter	1
21	18055	Hydraulic Adapter Shaft	1
22	18502	Bearing SKF 66306-2RS1/C3	1
23	18056	1/2-13 x 2" HHCS	2
24	18058	1/2" Split Washer	2
25	18059	1/2" Flat Washer	2
26	17010	1/2-13 Hex Nut	2
27	HY1012	UM16-45A-HX Hydraulic Motor Assy	1
28	18029	3" Clamp Assembly, Unkeyed	1
30	18600	Hydraulic Motor/Adapter Assembly	1
N/S	18100	Pump Repair Kit (3") (Consists of items marked *)	1
N/S	HY-1001	Hydraulic Motor Seal Kit, Cast Pump Model Only	

HYDRAULIC MOTOR DATA
U.S. Gallons/Rev. 0.0038
Cubic Inches/Rev. 0.878
Liters/Rev. 0.0144

Max Hydraulic Pressure 3000 PSI
Min Hydraulic Pressure 600 PSI
Inlet Port 1-1/16-12UN-2B
Outlet Port 1-5/16-12UN-2B
Minimum GPM Required 9 GPM 2370 RPM
Maximum GPM Required 13 GPM 3450 RPM
Ideal GPM Required 9 GPM 3600 RPM

CONNECTION INFORMATION
Inlet "A" Port
Outlet "B" Port

Supplied check valve is to ensure proper rotation of the Banjo pump. Place check valve in outlet port (marked "B") for proper right hand rotation. It is recommended that a minimum 3/4" inlet line & a minimum 1" outlet line be used. The outlet port must be connected directly back to the hydraulic fluid reservoir & not to any valving, regulators or flow diverters. The outlet port/return line back pressure must not exceed 250 PSI.

SPOOL VALVE INFORMATION
Required Outlet Flow Min 9 GPM / Max 13 GPM
Required System Pressure Min 600 PSI / Max 3000 PSI

