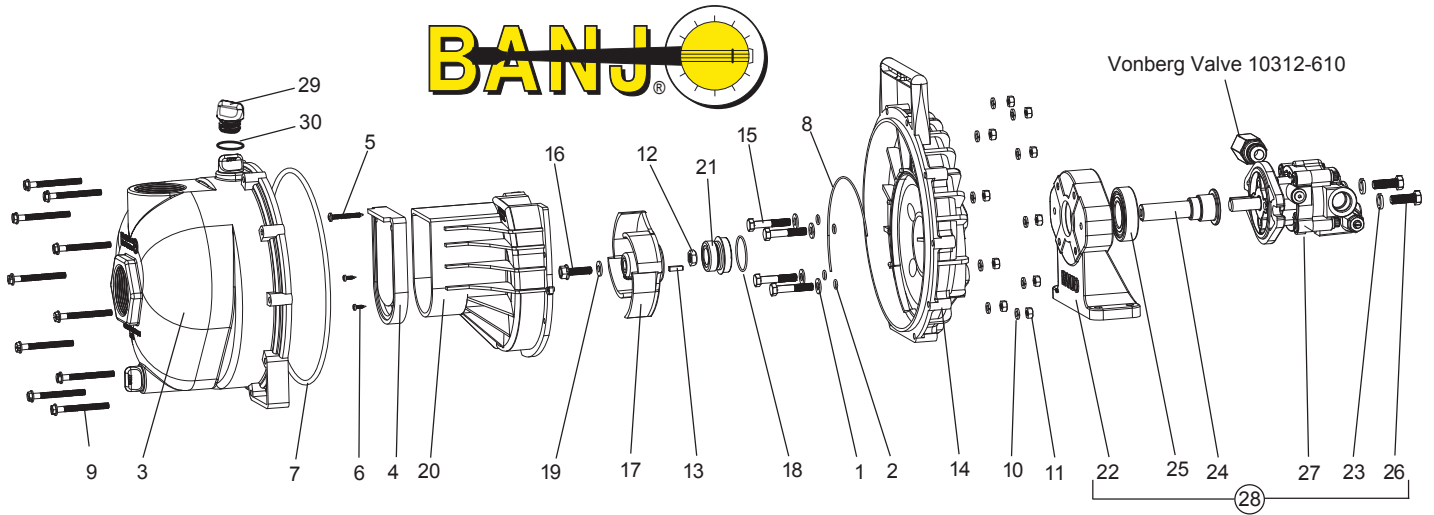


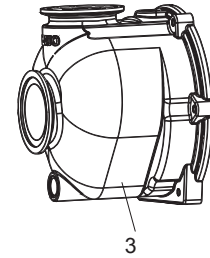
# Banjo 3" Hydraulic Driven Pump



Use 7/16-14 Bolt to Remove Impeller

## REPLACEMENT PARTS 3" POLY PUMPS W/ HYDRAULIC ADAPTER

ITEM	PART NO.	DESCRIPTION	QTY.
1	12901	SS Rear Bracket Washer	1
2	12717	O-Ring, EPDM	4
	12717V	O-Ring, FKM (viton type)	4
3	13712	Body Housing, Threaded 3" NPT	1
	M13712	Body Housing, 300 Manifold	1
4	12705	Check Valve, EPDM	1
	12705V	Check Valve, FKM (viton type)	1
5	12900	Screw, Stainless Steel	4
6	12725	Screw, Stainless Steel	2
7	12719A	O-Ring, EPDM	1
8	12754	O-Ring Segment, EPDM	1
	12754V	O-Ring Segment, FKM (viton type)	1
9	12720	Body Screw, Stainless Steel	10
10	V07018	Lock Washer, Stainless Steel	10
11	V07019	Nuts, Stainless Steel	10
12	12775A	Impeller Hex Nut	1
13	12902A	Impeller Key	1
14	12703A	Rear Bracket	1
15	12715A	5/16-24 x 1.75" HHCS	4
16	12765A	SS Impeller Bolt	1
17	13771	Impeller, 4 Vane 4.8" OD	1
18	12710	O-Ring for Seal Assembly	1
	12710V	FKM (viton type) O-Ring for Seal Assembly	1
19	12774VA	Gasket, Impeller Bolt	1
20	13702	Volute	
21	12713	Mechanical Seal Assembly EPDM (Standard)	1
	12733	Mechanical Seal Assembly (Use 12713)	1
	12713V	Mechanical Seal Assembly VITON	1
	12713B	Mechanical Seal Assembly BUNA	1
22	12049B	Hydraulic Pedestal Housing	1
23	V20018	3/8" Lock Washer	2
24	12055B	Adapter Shaft	1
25	17056	Bearing	1
26	18010SS	3/8-16 x 1.25" HHCS	2
27	HY1013	Hydraulic Motor	1
28	12600B	Complete Hydraulic Assembly	1
29	13777	Drain Plug	2
30	13778	O-Ring for Drain Plug	2



# Spray Advantage

### HYDRAULIC MOTOR DATA

U.S. Gallons/Rev. 0.0025

Cubic Inches/Rev. 0.580

Liters/Rev. 0.0097

Max Hydraulic Pressure 2000 PSI

Min Hydraulic Pressure 200 PSI

Inlet Port SAE 10 (7/8-14 UNF-2B)

Outlet Port SAE 10 (7/8-14 UNF-2B)

Minimum GPM Required 6 GPM 2400 RPM

Maximum GPM Required 10 GPM 4000 RPM

Ideal GPM Required 9 GPM 3600 RPM

### CONNECTION INFORMATION

Inlet "A" Port

Outlet "B" Port

Supplied check valve is to ensure proper rotation of the Banjo pump. Place check valve in outlet port (marked "B") for proper right hand rotation.

### SPOOL VALVE INFORMATION

Required Outlet Flow Min 8 GPM / Max 13 GPM

Required System Pressure Min 600 PSI / Max 3000 PSI