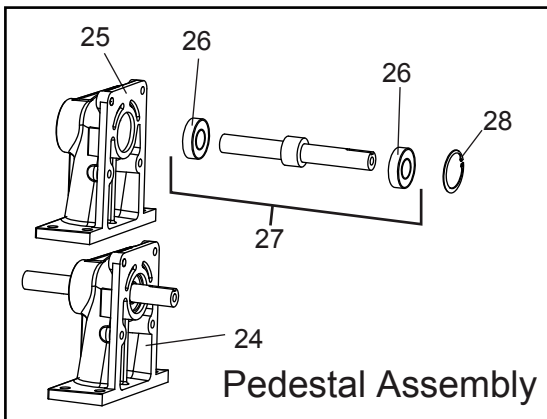
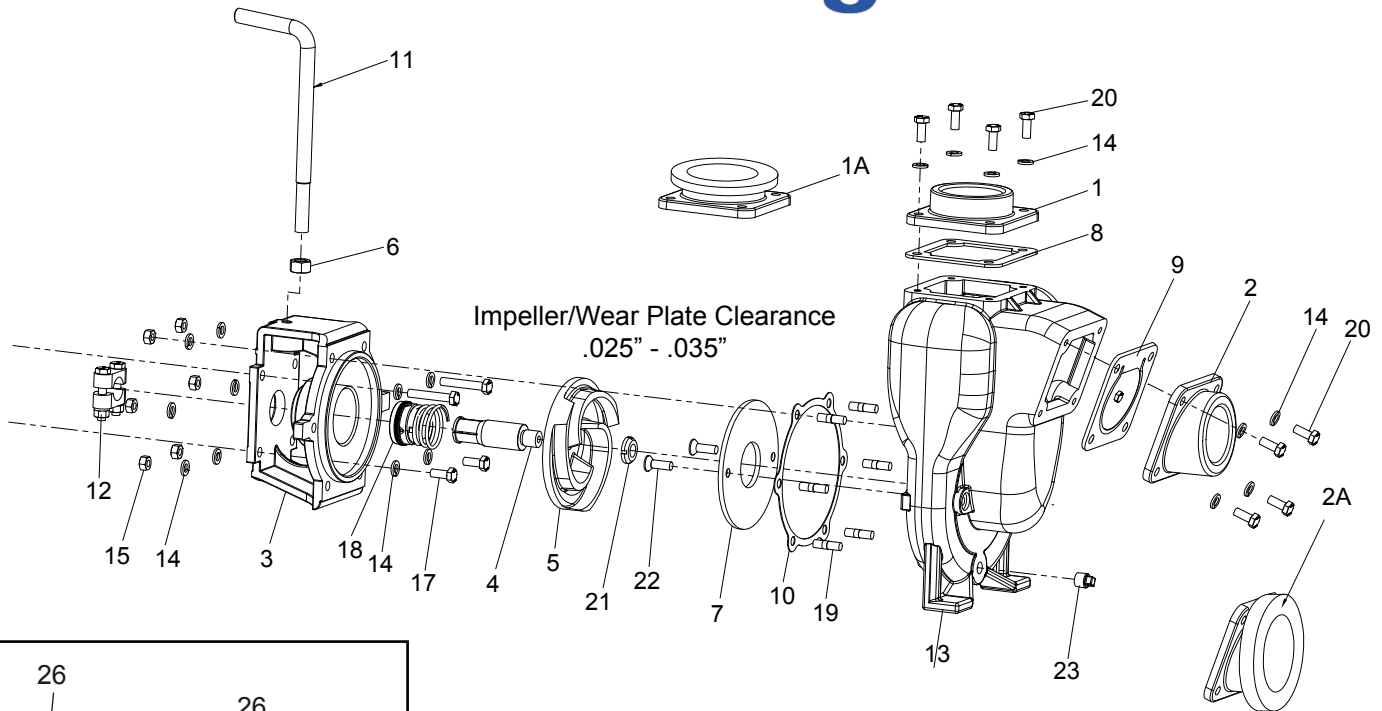




# Spray Advantage

# 1-1/2" 2"



Place spacer between wear plate and impeller and do not remove until bolted to drive shaft

## REPLACEMENT PARTS 1-1/2" & 2" CAST IRON PUMPS

REF. NO.	PART NO.	DESCRIPTION	QTY.
1	17000	Flange-Outlet 2"	1 (2" Only)
	17001	Flange-Outlet 1-1/2"	1 (1-1/2" Only)
1A	M17000	Flange-Outlet 2" Manifold	1 (2" Only)
2	17002	Flange-Inlet 20° 2"	1 (2" Only)
	17003	Flange-Inlet 20° 1-1/2"	1 (1-1/2" Only)
2A	M17002	Flange-Inlet 20° 2" Manifold	1 (2" Only)
3	17004	Adapter-Gas Engine	1
4*	17006	Sleeve Drive 3/4" for Gas Engine	(1 Per Pump)
5*	17008	Impeller - 5" (Standard)	1
6	17010	Hex Nut 1/2" - 13UNF-RH	1
7*	17011	Wear Plate	1
8	17013	Gasket EPDM	1
	17013BN	Gasket BUNA	1
9	17016	Gasket-Check Valve Assembly EPDM	1
	17016BN	Gasket-Check Valve Assembly BUNA	1
10*	17018	Gasket Adapter	1
11	15022	Handle	1
12	17023	Clamp 5/8", 3/4" Shaft Assy.(Old Style)	(1 Per Pump)
	17123	Clamp 5/8", 3/4" Shaft Assy. (Keyed)	(1 Per Pump)

REF. NO.	PART NO.	DESCRIPTION	QTY.
13	17026	Pump Housing	1
14	V10118	5/16" Lockwasher	18
15	V10119	5/16-18 Hex Nut S.S.	6
17	17040	Cap Screw 5/16-24 x 1.00" NF	4
18*	17035	Seal Assy. FKM (VITON ) Standard	(1 Per Pump)
	17028	Seal Assembly (EPDM)	(1 Per Pump)
	17035SD	Severe Duty Seal	(1 Per Pump)
19	17042	Stud	6
20	17019	Capscrew 5/16-18 x 3/4"	8
21	17009B	Nut, Hex 5/8-18 UNF	1
22	17130	Flat Head Screw	2
23	17032	1/4" Drain Plug	1
24	12882A	Pedestal Bearing Shaft Assembly	1
25	12882R	Pedestal	1
26	12883B	Bearing	2
27	12883	Shaft with Bearings	1
28	12884	Retaining Ring	2
N/S	17033	Z Rails Pair	1
N/S	17100	Pump Repair Kit (1-1/2" & 2") (Consists of items marked *)	1