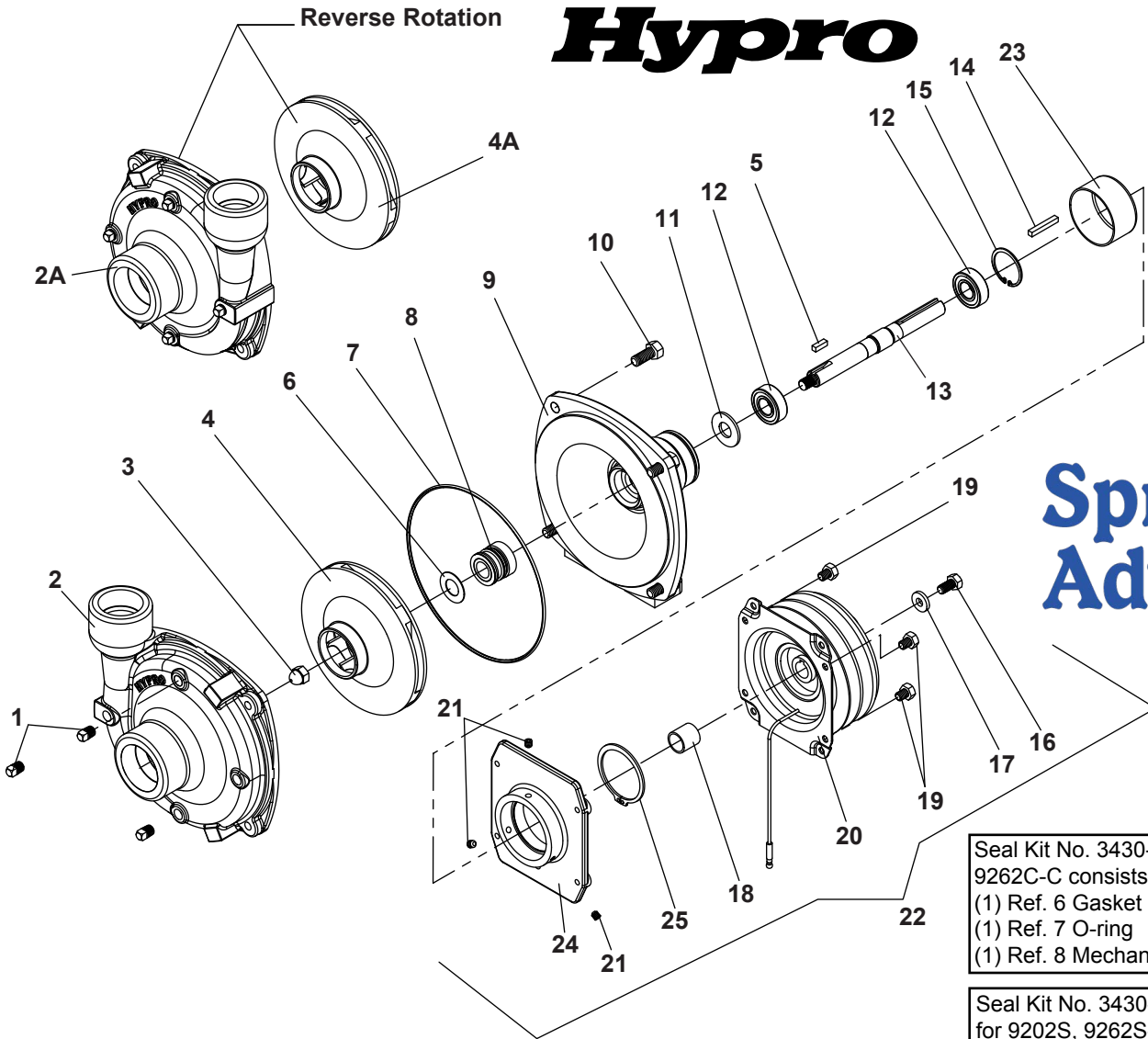


**9202C, 9202C-B, 9202C-R, 9202C-BR,  
9202S, 9202S-C, 9202S-R, 9262C-CR, 9262S-CR, 9262C-C and 9262S-C**

**Hypro**



**Spray Advantage**

Seal Kit No. 3430-0332 for 9202C & 9262C-C consists of:  
(1) Ref. 6 Gasket  
(1) Ref. 7 O-ring  
(1) Ref. 8 Mechanical Seal

Seal Kit No. 3430-0589 (Silicon Carbide) for 9202S, 9262S-C & 9262S-CR consists of:  
(1) Ref. 7 O-ring  
(1) Ref. 8 Mechanical Seal

Ref #	Qty	Part No.	Description
1	4	2406-0007	Drain Plug (Cast series)
1	4	2406-0016	Drain Plug (316 Stainless series)
2	1	0150-9200C	Pump Casing (Cast series)
2	1	0150-9200S1	Pump Casing (316 Stainless series)
2A	1	0152-9001S1	Pump Casing -Reverse (Cast series)
2A	1	0152-9000S	Pump Casing -Reverse (Stainless series)
3	1	2253-0002	Impeller Nut (Cast series)
3	1	2253-0006	Impeller Nut (316 Stainless series)
4	1	0401-9100P	Impeller (Model 9202C) - Nylon
4	1	0402-9100P	Impeller (Model 9202S) - Poly
4A	1	0404-9100P	Impeller -Reverse (Cast series) - Nylon
4A	1	0403-9100P	Impeller -Reverse (Stainless series) - Poly
5	1	1610-0015	Key (Cast series)
5	1	1610-0044	Key (Stainless series)
6	1	1700-0100	Gasket
7	1	1720-0083	O-ring
8	1	2120-0008	Mechanical Seal (Optional Buna-N)
8	1	2120-0009	Mechanical Seal (Cast series)
8	1	3430-0589	Mechanical Seal (Silicon Carbide) (Stainless) Includes Ref. #7 O-ring

Ref #	Qty	Part No.	Description
9	1	0750-9200C3	Mounting Flange (Cast series)
9	1	0756-9200S	Mounting Flange (Stainless series)
10	4	2210-0020	Bolt (Cast series)
10	4	2210-0125	Bolt (Stainless series)
11	1	1410-0056	Slinger Ring
12	2	2000-0010	Ball Bearing
13	1	3430-0844	Pump Shaft Prev 0505-9200
14	1	1610-0004	Key
15	1	1820-0013	Bearing Retainer
16	1	2210-0003	Bolt
17	1	2270-0092	Retaining Washer
18	1	1410-0107	Spacer
19	4	N/A	Bolt (part of clutch assy.) 1/4" x 3/8"
20	1	2526-0012	Clutch, 5" Dia
21	3	2230-0001	Set Screw
22	1	3430-0592	Clutch Kit
23	1	2300-0025	Protective Cover (9202C, 9202S)
24	1	0753-9200C	Mounting Bracket
25	1	1810-0036	Retaining Ring