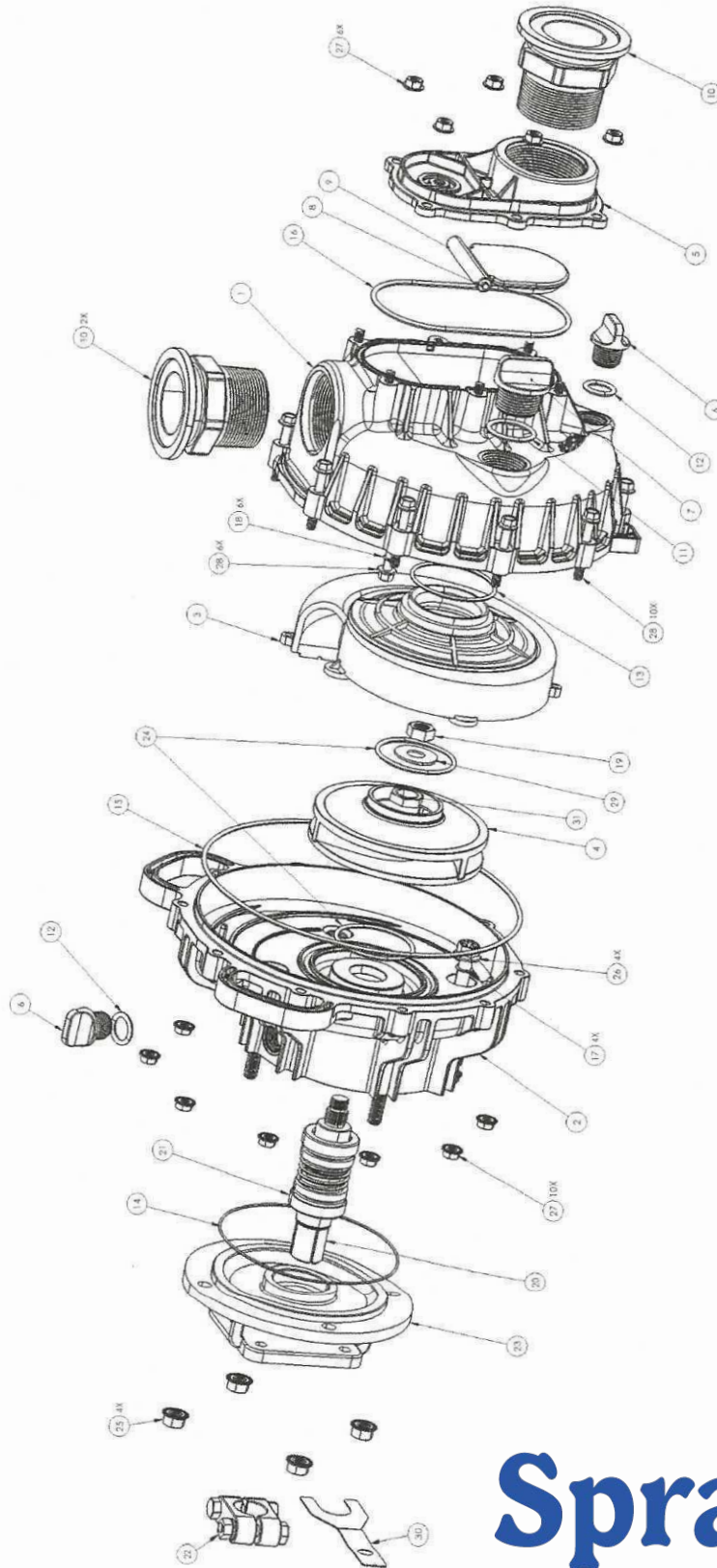


PSP-3240 Parts Breakdown:



PSP-3240 Exploded View



PSP-3240 Parts Breakdown:

Seal & O-ring kit #116403-91

Item	Description	Part #	Qty
1	HOUSING	116282-01	1
2	BACKPLATE	116283-01	1
3	SCROLL PLATE / SCROLL PLATE INSERT	116284-01A / 02A	1
4	IMPELLER	116285-91A	1
5	INLET FLANGE – NPT	116286-01	1
6	½" PLUG	116288-01	2
7	1" PLUG	116289-01	1
8	PIVOT PIN – 316SS	116290-01	1
9	FLAP – EPDM	116572-01	1
10	M220 FLANGE ADAPTER TO 2" MPT - OPTIONAL	116287-01	2
11	#123 VITON O-RING – 1" PLUG	116293-01	1
12	#115 VITON O-RING – ½" PLUG	116294-01	2
13	#139 VITON O-RING – VOLUTE	116295-01	1
14	#049 VITON O-RING – ENGINE ADAPTER	116296-01	1
15	M4X228 VITON O-RING – HOUSING	116297-01	1
16	#158 VITON O-RING – INLET FLANGE	116298-01	1
17	#012 VITON O-RING – 3/8" BOLTS	116300-01	4
18	#010 VITON O-RING – ¼" BOLTS	SMPT-0067	6
19	1/2" IMPELLER RETAINING NUT - 316SS (approx. 30 ft-lb – use impact gun)	92033	1
20	IMPELLER SHAFT – 316SS	116299-01	1
21	DOUBLE SEAL – 1" VITON, CERAMIC	S-3565-V	1
22	SHAFT CLAMP	S-3607S	1
23	GAS ENGINE / HYDRAULIC MOTOR ADAPTER OR ELECTRIC MOTOR ADAPTER	S-3556 or S-3609	1
24	TEFLON RING	116246-01	2
25	3/8"-16 FLANGED NUT (10 ft-lb max. for re-assembly)	91077	4
26	3/8"-16 X 3" LG. FLANGED BOLT, 316SS	116291-01	4
27	1/4"-20 FLANGED NUT (5 ft-lb max. for re-assembly)	92017	16
28	1/4"-20 X 2" LG. FLANGED BOLT, 316SS	116292-01	16
29	IMPELLER WASHER - 316SS	93044	1
30	SHAFT INSTALLATION TOOL	116301-01	1
31	5/8" IMPELLER INSERT NUT – 316SS	116470-01	1

